



The Corona Challenge

St. Petersburg Yacht Club 11 Central Avenue St. Petersburg, FL

Sailing Instructions

May 30 & June 6, 2020

1. Rules

1.1. The race will be governed by *rules* as defined in the current *The Racing Rules of Sailing* and the *WFPHRF Class Rules*. If there is a conflict between the Sailing Instructions and any other document governing the event, the Sailing Instructions will take precedence. This changes RRS 63.7. As allowed by RRS 88.2, the US Sailing prescriptions to RRS 60, 63.2, & 63.4 do not apply to these classes.

2. Notices to Competitors

2.1 The Official Notice Board will be the Yacht Scoring Website for this event.

2.2 It is the responsibility of each competitor to check the Official Notice Board for any amendments or other notices.

3. Changes to the Sailing Instructions

3.1 Any change to the sailing instructions will be posted before 0815 on the day it will take effect, except that any change to the schedule of races will be posted by 2100 on the day before it will take effect.

4. Signals Made Ashore (Deleted)

5. Schedule of Race

5.1 Saturday May 30, 2020 1200 First Warning

5.2 Saturday, June 6, 2019 1200 First Warning

5.3 One race is scheduled.

6. Divisions

6.1 The division of classes will be determined according to WFPHRF rating and the number of entries in each class. (See scratch sheet)

7. Class Flags

7.1 Class Flags & Order of Starts

SPINNAKER CLASS & RACER CRUISER

FIRST START

PURPLE FLAG

CRUISING CLASS & NON-SPINNAKER/Double-handed NON-SPINNAKER

SECOND START

YELLOW FLAG

8. Racing Area

8.1 The Racing area will be in Tampa Bay ESE of the entrance to the SPYC Harbor. See Appendix B and C

9. Courses

9.1 Appendix B supplied with these sailing instructions gives the courses to be sailed.

9.2 Before the Warning Signal, the course to be sailed will be displayed on a white board on the stern of the signal boat.

9.3 Spinnaker and Racer/Cruisers' courses will be displayed in BLACK writing with SPIN at the top.

9.4 Non-Spinnaker & Cruising Courses will be displayed in RED writing with CRU at the top.

10. Marks

10.1 Marks will be fixed government marks, and the starting mark will be "F" Mark.

10.2 The Finish mark will be "F" Mark.

10.3 Mark locations are as shown in Appendix C.

11. The Start

11.1 The warning signal for each succeeding class shall be made with or after the starting signal of the preceding class.

11.2 The order of starts will be as designated in the Sailing Instruction 7.

11.3 The starting line will be between a staff from which an orange flag will be displayed on the race committee boat and the starting mark. Should the wind conditions necessitate a postponement prior to the start, the R/C may move the starting area farther up the course by displaying code flag "L" and motoring towards the next mark. In this case, the starting mark will be either a mark of the course, a nearby government aid, or an inflatable buoy. Should the R/C pass a mark of the course, that mark is then eliminated from the course.

11.4 Before the start of the race, each vessel shall check-in with the race committee boat via VHF Channel 63, or by passing across the stern of the race committee boat on a starboard tack and hailing the vessel name, sail number, and class. Only the race committee may protest a competitor under this section. This changes RRS 60.1.

11.5 Boats whose warning signal has not been made shall stay away from the starting area.

11.6 A boat starting later than 5 minutes, 10 minutes for Cruising, after her starting signal will be scored a Did Not Start (DNS) without a hearing. This changes RRS 63.1, A4.1, and A5.

12 Recalls

12.1 The race committee may, after the starting signal, hail the sail numbers of boats that have not complied with RRS 29.1. The delay of such a hail, the order of hail or failure of a competitor to hear such a hail shall not be grounds for granting redress. This changes RRS 62.1(a).

12.2 If the race committee signals a general recall, the division that has been recalled shall start AFTER all other divisions have started. If more than one division has a general recall, then each recalled division shall restart in their respective starting position AFTER all other divisions have started. This changes RRS 29.2.

13. The Finish

13.1 The finish line will be between a staff from which an orange flag is displayed on the race committee boat and the finish mark.

14. Penalty Systems

14.1 The Scoring Penalty RRS 44.3 will apply when a boat may have broken a rule of RRS Part 2. A boat may not take a Two-Turns Penalty; this changes rule 44.1 The One-Turn Penalty will apply when a boat may have broken RRS 31.

14.2 An Alternative Acknowledgement form will be available at the Protest Desk for those who have taken a Penalty.

15. Time Limit

15.1 All boats not finished by 1800 will be scored a "Did Not Finish" (DNF). This changes RRS 63.1 and A5.

16. Retiring from Race

16.1 Any boat retiring from the race must inform the Race Committee Boat.

16.2 The Race Committee will monitor VHF channel 63 & 16.

17. No Protests allowed.

18 SCORING

18.1 Corrected times for this race will be calculated using the WFPHRF Random Leg Course (RLC) ratings:

18.2 The Low Point System of Appendix A of the racing rules will apply, except that no score will be excluded.

19. COMMUNICATIONS

19.1 The race committee will monitor VHF channel 63 for courtesy communications from/to regatta participants. Nothing said over VHF Channel 63 for courtesy reasons shall be grounds for protests or redress.

19.2 A boat shall neither make radio transmissions while racing nor receive radio communications not available to all boats. This restriction also applies to cell phones. The only exception is SI 19.1

19.3 The race committee will monitor VHF channel 63 and 16 after the start.

20. Prizes

Prizes will be given to the first, second, and third place finishers for each class/division based upon corrected time using the Random Leg Rating (RLC) handicap system of the WFPHRF.

21. Disclaimer of Liability

Competitors participate in this regatta at their own risk. See RRS Rule 4 Decision to Race. The St. Petersburg Yacht Club, organizing authority, the sponsors, the race committee, officers and board of directors of SPYC, and all those involved in these organizations will not accept any Liability/Responsibility for material damage or personal injury or death sustained in conjunction with or prior to, during or after this regatta.

APPENDIX B - MARKS and COURSES

The Starting Line will be at "F" Mark

The Finish line will be at "F" Mark

MARKS

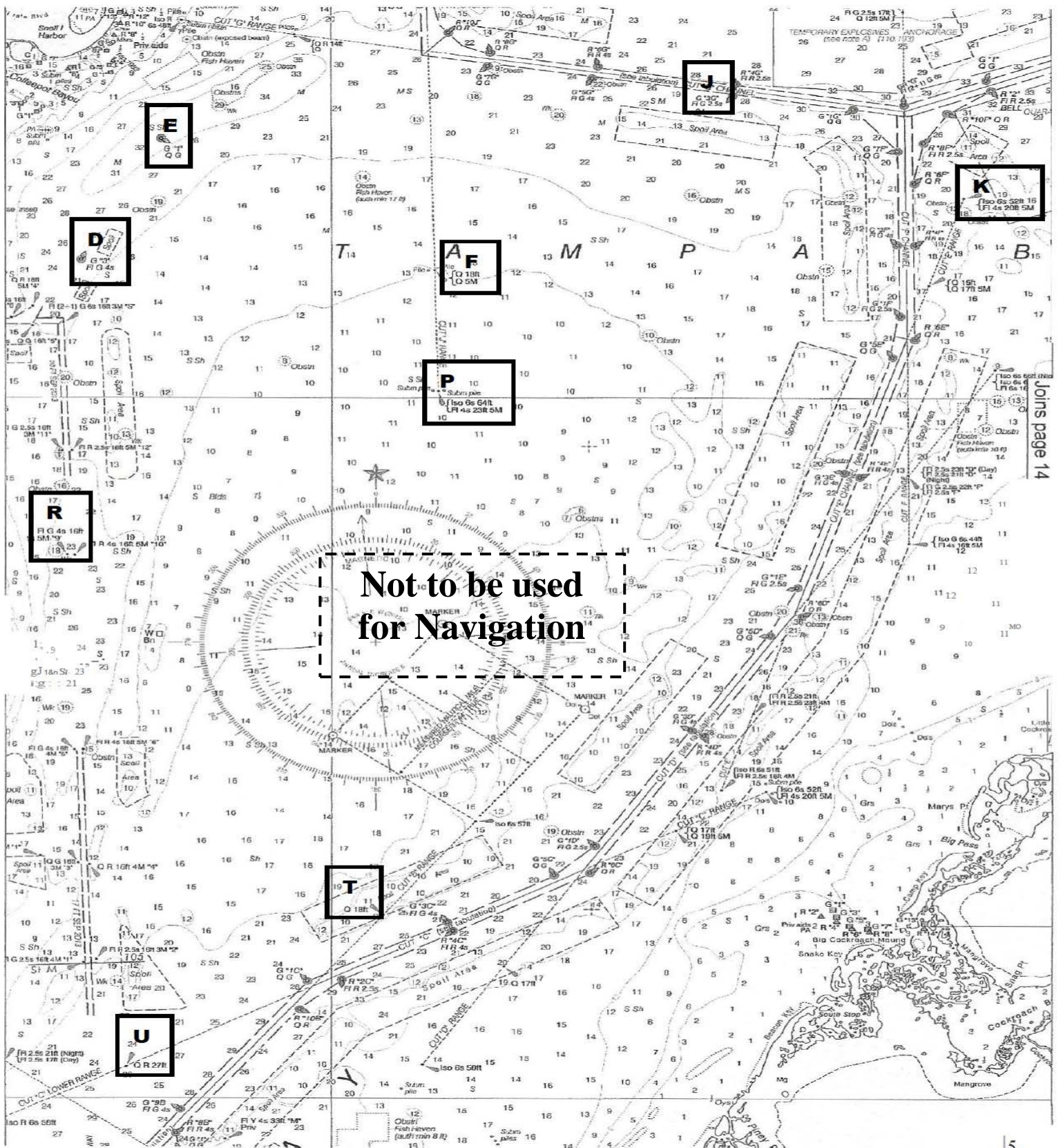
Mark "D"	G "3" Fl G 4s	1nm ESE of SPYC harbor entrance	27 46.0N	82 36.5W
Mark "E"	G "1" QG	1.2nm ENE of SPYC harbor entrance	27 46.8N	82 36.1W
Mark "F"	Q 10 ft Q5M	Front Range Cut J Channel	27 45.9N	82 34.3W
Mark "J"	G "3G" Fl G 2.5s	Cut G Channel	27 47.1N	82 32.5W
Mark "K"	Iso 6s 52ft Fl 4s 20ft 5m	Back Range Cut E Channel	27 46.3N	82 31.0W
Mark "P"	Iso 6s 50ft Fl 4s 5m "A" "B"	Back Range Cut J Channel	27 45.0N	82 34.3W
Mark "R"	Fl G4s 16ft 5M"9"	Pinellas Channel	27 43.9N	82 36.6W
Mark "T"	Q 18 ft	Front Range Cut B Channel	27 41.3N	82 34.7W
Mark "U"	QR 27 ft	Lower Range Cut C Channel	27 40.2N	82 36.3W

<u>COURSE</u>	<u>MARKS TO BE ROUNDED</u>	<u>SIDE TO BE ROUNDED ON</u>	<u>APPROX. DISTANCE</u>
#1	START-K-T-R-D FINISH	STDB	14.5NM
#2	START-K-R-D FINISH	STDB	10.9NM
#3	START-T-D FINISH	STDB	11.4NM
#4	START-T-U-D FINISH	STDB	14.1NM
#5	START-K-T-U-D FINISH	STDB	15.9NM
#6	START-P-T-U-D-F-D FINISH	STDB	18.5NM
#7	START-P-T-U-D-F-D-F-D FINISH	STDB	21.9NM
#8	START-K-T-U-D-F-D FINISH	STDB	22.5NM
#9	START-P-T-U-R-P-R-D FINISH	STDB	18.8NM
#10	START-K-T-U-R-P-R-D FINISH	STDB	23.2NM
#11	START-T-U-R-FINISH	STDB	14.1NM

See approximate mark locations on Chart below:

Appendix C

Chart for Pusser's Rum Cup Approximate Location of Marks



Joins page 14